



# Southwest Nebraska Public Health Department

## NEWS RELEASE

January 31, 2022

FOR IMMEDIATE RELEASE

Contact: Myra Stoney, Health Director, [director@swhealth.ne.gov](mailto:director@swhealth.ne.gov), 308-345-4223

### COVID-19 Report for Southwest Nebraska

- 281 cases of COVID-19 were recorded in SWNPHD between January 24 - January 30. 18.1% of all tests were positive in the last week.
- Test positivity rates seem to have dropped from the previous week's high, and overall cases have gone down by 80 cases. However, the past 4 weeks have seen an average of over 260 cases/week.
- 30% of all new COVID cases detected in SWNPHD in the past 6 months were reported in last 4 weeks.
- One additional death due to COVID-19 was confirmed, bringing the total to 92 deaths.

### Weekly report Jan 17 – Jan 23, 2022

#### Overview

The weekly report will look at COVID-19 cases in SWNPHD across different time periods, presenting graphs showing daily progress of cases and a weekly summary in conclusion

- The tables describe total tests conducted and positive cases across SWNPHD from **Jan 24 – Jan 30** (1 week) and **Jan 3 – Jan 30** (4 weeks). We describe new cases by age, gender and county of residence, and present weekly and monthly **test positivity rates**.
- The graph looks at the weekly progress of the pandemic from **April 1, 2020 – Jan 23, 2022**, across all 9 counties in SWNPHD. We describe the **daily COVID positive cases (7-day rolling average<sup>1</sup>)** across SWNPHD. We further describe the average daily case rate by age, dividing the population by **10-year age categories**.

---

<sup>1</sup> 7-day rolling average refers to the sum of the cases reported on that day and the preceding 6 days divided by 7. This number is presented for each day to 'smooth out' the line for cases.



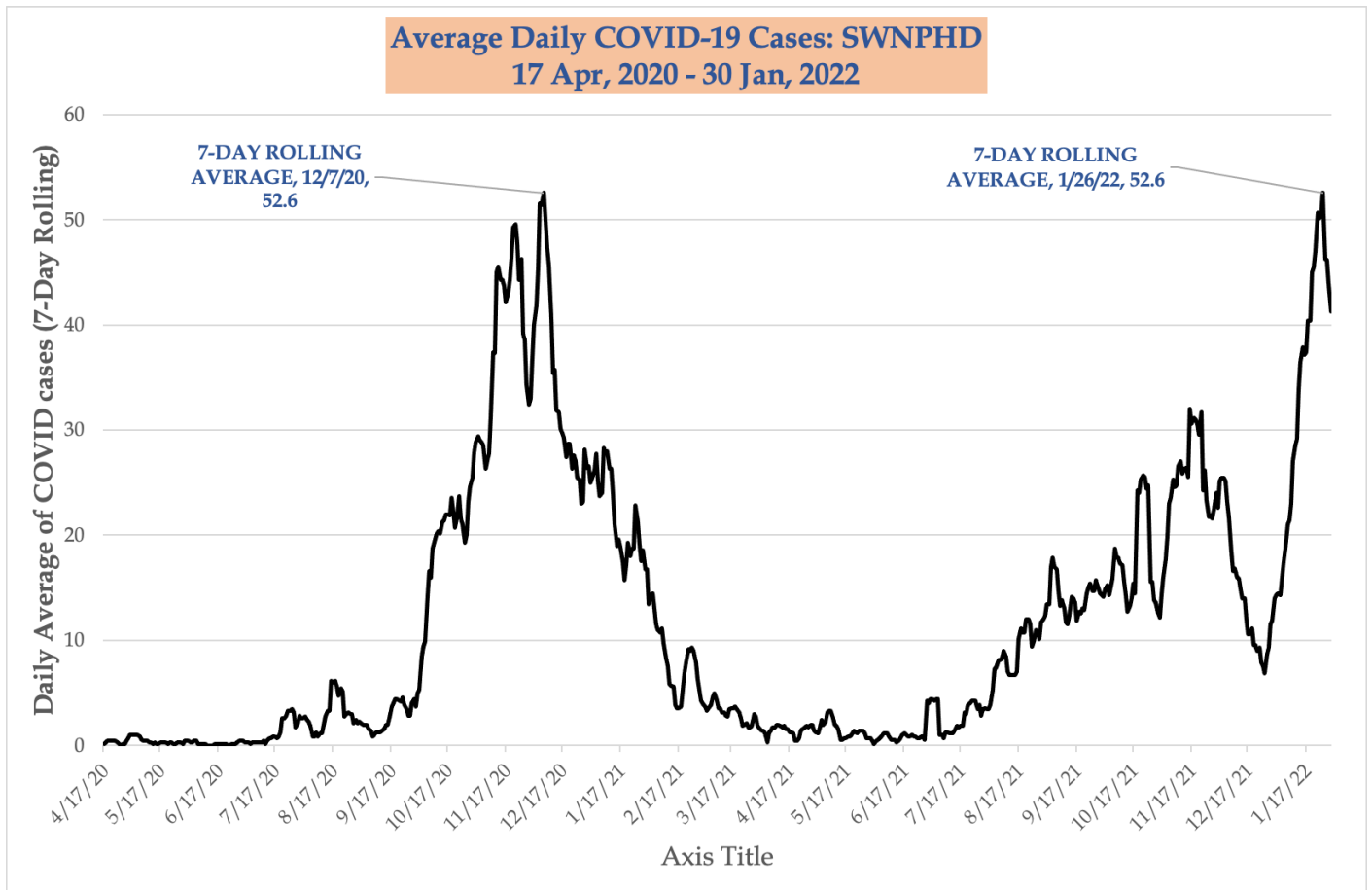
# Southwest Nebraska Public Health Department

- The table below describes COVID tests conducted and the positives and the positivity rate for the past week (Jan 24 – Jan 30, 2022) & the past 4 weeks (Jan 3 – Jan 30, 2022)

	Jan 24 – Jan 30 (1 week)			Jan 3 – Jan 30 (4 weeks)		
	Total tests conducted	Positive cases	P. rate (%)	Total tests conducted	Positive cases	P. rate (%)
<b>County</b>						
Chase	133	15	11.3%	517	70	13.5%
Dundy	164	9	5.5%	645	56	8.7%
Frontier	79	17	21.5%	238	47	19.7%
Furnas	202	69	34.2%	857	220	25.7%
Hayes	11	2	18.2%	44	9	20.5%
Hitchcock	147	15	10.2%	444	52	11.7%
Keith	323	86	26.6%	1,365	285	20.9%
Perkins	127	19	15.0%	497	92	18.5%
Red Willow	366	49	13.4%	1,467	211	14.4%
<b>Total</b>	<b>1,552</b>	<b>281</b>	<b>18.1%</b>	<b>6,074</b>	<b>1,042</b>	<b>17.2%</b>
<b>Age (in yrs)</b>						
0-17	119	41	34.5%	457	124	27.1%
18-29	216	39	18.1%	894	177	19.8%
30-39	162	37	22.8%	697	178	25.5%
40-49	196	36	18.4%	727	146	20.1%
50-59	227	41	18.1%	875	133	15.2%
60-69	194	37	19.1%	746	134	18.0%
70-79	143	32	22.4%	537	90	16.8%
80-89	295	18	6.1%	1,140	59	5.2%
<b>Total</b>	<b>1552</b>	<b>281</b>	<b>18.1%</b>	<b>6,073</b>	<b>1041</b>	<b>17.1%</b>
<b>Gender</b>						
Female	1102	165	15.0%	4,314	608	14.1%
Male	444	110	24.8%	1,744	424	24.3%
Data missing/ not disclosed	6	6	100.0%	16	10	62.5%
<b>Total</b>	<b>1552</b>	<b>281</b>	<b>18.1%</b>	<b>6,074</b>	<b>1,042</b>	<b>17.2%</b>

# Southwest Nebraska Public Health Department

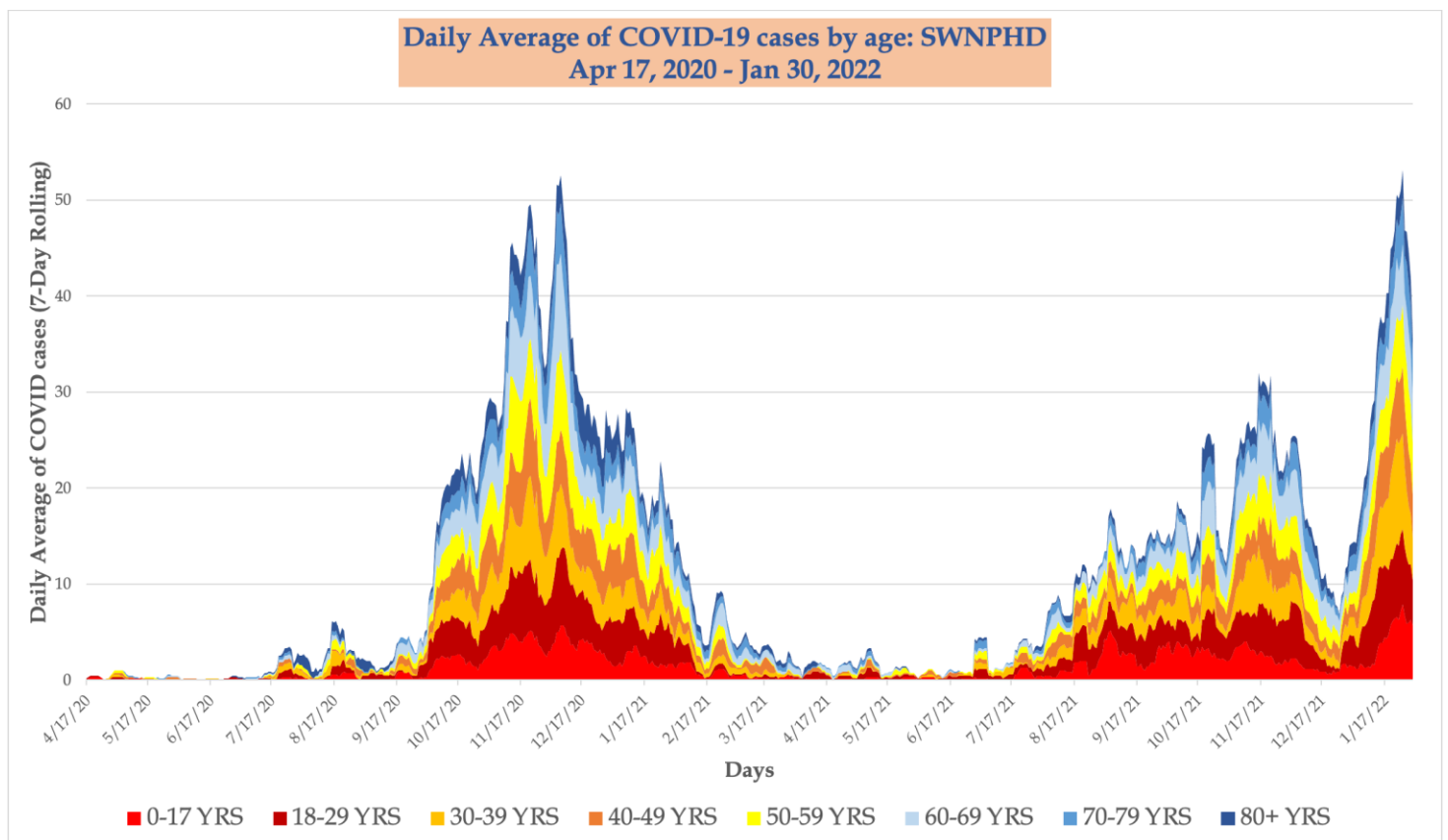
- The graph below describes the **average daily number of new cases** across all 9 counties of Southwest Nebraska Public Health Department from 5 May 2020 – 30 January 2022. Daily average is depicted by the 7-day rolling average of cases. At any point on the timeline, the height of the graph corresponds to the average number of new COVID cases for the previous 7-days.





# Southwest Nebraska Public Health Department

- The graph below describes the **daily number of new cases** across all 9 counties of SWNPHD from 5 May 2020 – 30 January 2022. Daily average is represented by the 7-day rolling average of cases. The intervening 87 weeks are presented by the weekly number of new COVID cases recorded, and the age breakup of cases recorded each week.
- The width of the graph represents the magnitude of cases, and the individual colors describe the ages. In general, blue = 60+ years, Yellow & Orange = 30-59 year olds, Red = Less than 30 year olds.



SWNPHD is located at 404 West 10th St (1 block north of Arby's) in McCook and can be reached by calling 308-345-4223. The website [www.swhealth.ne.gov](http://www.swhealth.ne.gov) contains many resources and additional information helpful to prevent disease, promote and protect health. You can also follow SWNPHD on Facebook, Twitter, and Instagram. SWNPHD serves Chase, Dundy, Frontier, Furnas, Hayes, Hitchcock, Keith, Perkins, and Red Willow counties.

###